



## Spring 2026 ASL Classes

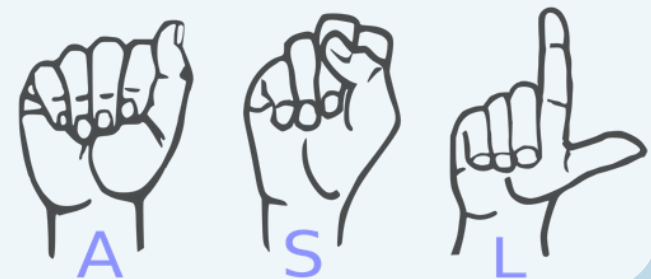
### General Class Information

We are thrilled to share our latest non-credit offerings with you! We have several in-person and virtual options for children, teens, and adults.

Each level meets for a total of 20 hours over ten weeks unless otherwise stated. The cost for one ten-week course is **\$200**. Our Level 1 classes utilize the textbook *A Basic Course in American Sign Language (ABC) - Second Edition*, which can be purchased separately from Amazon, eBay, or [www.diglo.com](http://www.diglo.com). The textbook costs approximately \$40 to continue for Levels 2, 3, 4, and 5 in the future. All classes are presented in ASL and taught by Deaf individuals. Classes are for students age 18 or older unless otherwise stated.

DHCC reserves the right to cancel and/or combine classes due to insufficient enrollment on the date of the deadline. DHCC will only run a class if the paid enrollment minimum is met by the deadline. No refunds will be given after the first night of class.

If you have any questions, reach out to [asl@dhcc.org](mailto:asl@dhcc.org) to inquire. We hope to see you this fall!



**Registration must be submitted by Friday, May 1, 2026**

**If you are unable to register for any reason, please contact us at [asl@dhcc.org](mailto:asl@dhcc.org) or (484) 206-7896**



## Spring 2026 ASL Classes

### ASL Classes Description

#### A Basic Course in American Sign Language (ABC) textbook – Lessons 1-22

**ASL 1: American Sign Language:** (ABC, Lessons 1-5) Beginners Learn American Sign Language (ASL) in a relaxed learning environment with structured and spontaneous dialogue. You will develop appropriate conversational strategies unique to Deaf Culture while learning ASL vocabulary, ASL grammar, Deaf culture, and the history of Deaf culture and ASL.

**ASL 2: American Sign Language:** Beginners (ABC, Lessons 6-10) This is the second level of American Sign Language (ASL) classes. This class is intended for beginners with some prior knowledge of ASL – specifically, students who have already taken and passed ASL 1 or who have been evaluated into this level (in the case of students who already have prior knowledge but didn't take classes with DHCC). In this class, you will continue to learn ASL vocabulary, ASL grammar, Deaf Culture, and the history of Deaf culture and ASL.

**ASL 3: American Sign Language:** Beginners (ABC, Lessons 11-16) This is the third level of American Sign Language (ASL) classes. This class is intended for beginners with some prior knowledge of ASL – specifically, students who have already taken and passed ASL 2 or who have been evaluated into this level (in the case of students who already have prior knowledge but didn't take classes with DHCC). In this class, you will continue to learn ASL vocabulary, ASL grammar, Deaf Culture, and the history of Deaf culture and ASL.

**ASL 4: American Sign Language:** Level 4: (ABC, Lessons 17-22) & (ASL at Work, Units 13-16) This is the fourth level of American Sign Language (ASL) classes. This class is intended for students with some prior knowledge of ASL – specifically, students who have already taken and passed ASL Levels 1, 2, and 3 or who have been evaluated into this level (in the case of students who already have prior knowledge but didn't take classes with DHCC). In this class, you will continue to learn vocabulary, ASL grammar, Deaf culture, and the history of Deaf culture and ASL.



## Spring 2026 ASL Classes

### ASL Classes Description

#### A Basic Course in American Sign Language (ABC) textbook – Lessons 1-22

**ASL 5: American Sign Language: Level 5: (ABC, Review Lessons 1-22)** This is the fifth level of American Sign Language (ASL) classes. This class is intended for students with some prior knowledge of ASL – specifically, students who have already taken and passed ASL Levels 1, 2, 3, and 4 or who have been evaluated into this level (in the case of students who already have prior knowledge but didn't take classes with DHCC). In this class, you will continue to learn vocabulary, ASL grammar, Deaf culture, and the history of Deaf culture and ASL.

#### Deaf Culture, Fingerspelling, & Numbering

**Deaf Culture, Fingerspelling, & Numbering:** (MUST complete ASL 2 or an evaluation with one of our qualified Deaf instructors). In this class, you will continue learning to focus on the basics of American Sign Language (ASL), including fingerspelling, numbers, and classifiers.



## Spring 2026 ASL Classes

### ASL Classes Description Conversational ASL Classes

**Conversational ASL 1 Receptive & Expressive Skills:** (MUST complete ASL 5 in order to take Conversational ASL Receptive & Expressive or complete an evaluation with one of our qualified Deaf instructors). This class focuses on developing both the ability to understand (receptive) and produce (expressive) American Sign Language (ASL). Receptive skills involve understanding signs and language, while expressive skills involve creating and signing accurately. In this class, you will continue learning receptive skills (comprehension, listening, reading, and contextual understanding) and expressive skills (signing accuracy, vocabulary, grammar, natural expression, narrative, and communication).

**Conversational ASL 2:** (MUST complete ASL Receptive & Expressive or complete an evaluation with one of our qualified Deaf instructors). This class focuses on improving your ability to communicate in ASL through real-time conversations and storytelling. In this class, you will continue learning ASL grammar, classifiers, slang, more ASL vocabulary, and dialogue.

**Conversational ASL 3 Continuing:** (MUST complete ASL Conversational ASL 2 or complete an evaluation with one of our qualified Deaf instructors). This class focuses on improving your ability to communicate in ASL through real-time conversations and storytelling. In this class, you will continue learning ASL vocabulary and storytelling and further develop your fluency and social skills.

**Conversational ASL 4 Continuing:** (MUST complete ASL Conversational ASL 3 or complete an evaluation with one of our qualified Deaf instructors). In this class, you will continue learning more storytelling, dialogue, and Deaf Culture.

**Advanced Conversational ASL:** In this class, you will continue learning more dialogue and Deaf Culture.



## Spring 2026 ASL Classes

### ASL Classes Description

#### Kids & Teen ASL Classes

#### **Kids ASL Classes – Virtual – The ten-week course costs \$75 for thirty minutes per week.**

**Kids-1 (ages 2-5):** In this class, you will continue learning basic American Sign Language (ASL) and storytelling.

**Kids-2 (ages 6-8):** In this class, you will continue learning basic American Sign Language (ASL), simple conversations, using games, activities, and storytelling.

**Kids-3 (ages 9-11):** In this class, you will continue learning American Sign Language (ASL) Vocabulary, simple conversations, using games, activities, and storytelling.

#### **Teen ASL Classes (ages 12-17) – Virtual/In-Person – The ten-week course costs \$100 for one hour per week.**

#### **The textbook/PDF name is American Sign Language. YES!**

**Teen 1:** In this class, you will continue learning and focus on the basics, such as vocabulary, fingerspelling, and conversational skills.

**Teen 2:** (MUST complete Teen 1 or an evaluation with one of our qualified Deaf instructors). You will continue learning and focus on the basics, such as vocabulary, fingerspelling, and conversational skills.

**Teen 3:** (MUST complete Teen 2 or an evaluation with one of our qualified Deaf instructors). You will continue learning and focus on the basics, such as vocabulary, fingerspelling, and conversational skills.

**Teen 4:** (MUST complete Teen 3 or an evaluation with one of our qualified Deaf instructors). You will continue learning and focus on the basics, such as vocabulary, fingerspelling, and conversational skills.



# Spring 2026 ASL Classes

No classes 5/25, 6/19, 7/3

**Weekday and Weeknight In-Person & Virtual Offerings**  
Register at <https://www.dhcc.org/education-programs/asl-classes>

## Ten-Week Virtual Classes

6:30-8:30 pm

ASL 1a	Mon 5/4-7/13	(make-up 7/20)
ASL 1b	Tue 5/5-7/7	(make-up 7/14)
ASL 1c	Wed 5/6-7/8	(make-up 7/15)
ASL 1d	Thurs 5/7-7/9	(make-up 7/16)
ASL 2a	Mon 5/4-7/13	(make-up 7/20)
ASL 2b	Tue 5/5-7/7	(make-up 7/14)
ASL 2c	Wed 5/6-7/8	(make-up 7/15)
ASL 3a	Mon 5/4-7/13	(make-up 7/20)
ASL 3c	Wed 5/6-7/8	(make-up 7/15)
ASL 4a	Mon 5/4-7/13	(make-up 7/20)
ASL 4c	Wed. 5/6-7/8	(make-up 7/15)
ASL 5a	Mon 5/4-7/13	(make-up 7/20)
ASL 5c	Wed 5/6-7/8	(make-up 7/15)

## Ten-Week Virtual Classes

6:30-8:30 pm

Convo 3-4a	Mon 5/4-7/13	(make-up 7/20)
Convo 1-2c	Wed 5/6-7/8	(make-up 7/15)
Convo 3-4d	Thurs 5/7-7/9	(make-up 7/16)
Deaf Culture, Fingerspelling & Numbering-b	Tue 5/5-7/7	(make-up 7/14)

## Saturday morning Virtual Classes

Adv Convo-f	Sat 5/9-7/18	(make-up 7/25)	8am-10am
ASL 1f	Sat 5/9-7/18	(make-up 7/25)	8am-10am
ASL 2f	Sat 5/9-7/18	(make-up 7/25)	8am-10am

\*For your information: a,b,c,d,e, and f correspond to Monday (a), Tuesday (b), Wednesday (c), Thursday (d), Friday (e), and Saturday (f).



# Spring 2026 ASL Classes

No classes 5/25, 6/19, 7/3

**Weekday and Weeknight In-Person & Virtual Offerings**  
Register at <https://www.dhcc.org/education-programs/asl-classes>

## Ten-Week In-Person Classes 6:30-8:30pm

**DHCC ASL 1 Mon 5/4-7/13 (make-up 7/20)**  
Deaf-Hearing Communication Centre  
630 Fairview Rd., Ste. 103, Swarthmore, PA 19081

**DHCC Convo Mon 5/4-7/13 (make-up 7/20)**  
Deaf-Hearing Communication Centre  
630 Fairview Rd., Ste. 103, Swarthmore, PA 19081

**DHCC ASL 1 Tue 5/5-7/7 (make-up 7/14)**  
Deaf-Hearing Communication Centre  
630 Fairview Rd., Ste. 103, Swarthmore, PA 19081

**DHCC ASL 1 Wed 5/6-7/8 (make-up 7/15)**  
Deaf-Hearing Communication Centre  
630 Fairview Rd., Ste. 103, Swarthmore, PA 19081

**DHCC Convo 3 Wed 5/6-7/8 (make-up 7/15)**  
Deaf-Hearing Communication Centre  
630 Fairview Rd., Ste. 103, Swarthmore, PA 19081

**DHCC ASL 1 Thurs 5/7-7/9 (make-up 7/16)**  
Deaf-Hearing Communication Centre  
630 Fairview Rd., Ste. 103, Swarthmore, PA 19081

**DHCC ASL 2 Thurs 5/7-7/9 (make-up 7/16)**  
Deaf-Hearing Communication Centre  
630 Fairview Rd., Ste. 103, Swarthmore, PA 19081

## Ten-Week In-Person Classes 6:30-8:30pm

**TBP ASL 2 Wed 5/6-7/8 (make-up 7/15)**  
The Bagel Place  
404 Queen St., Philadelphia, PA 19147

**PAH ASL 5 Mon 5/4-7/13 (make-up 7/20)**  
PAHrtners Deaf Services  
614 N Easton Rd., Glenside, PA 19038

**PAH ASL 2 Thurs 5/7-7/9 (make-up 7/16)**  
PAHrtners Deaf Services  
614 N Easton Rd., Glenside, PA 19038

**PSD ASL 3 Wed 7/6-7/8 (make-up 7/15)**  
Pennsylvania School for the Deaf (PSD)  
100 West School House  
Philadelphia, PA 19144

## Ten-Week In-Person Classes 6:30-8:00pm

**Deaf Culture, Fingerspelling, & Numbering**  
**Tue 5/5-7/7 (make-up 7/14)**  
Deaf-Hearing Communication Centre  
630 Fairview Rd., Ste. 103, Swarthmore, PA 19081



# Spring 2026 ASL Classes

No classes 5/25, 6/19, 7/3

**Weekday and Weeknight In-Person & Virtual Offerings**  
**Register at <https://www.dhcc.org/education-programs/asl-classes>**

**Ten-Week In-Person Classes**  
**6:00-8:00pm**

**TechOwl ASL 1** **Thurs 5/7-7/9 (make-up 7/16)**  
TechOwl Community Space  
1392 Cecil B. Moore Ave., Philadelphia, PA 19122

**Ten-Week In-Person Classes**  
**10am-noon**

**DHCC ASL 2** **Fri 5/8-7/24 (make-up 7/31)**  
Deaf-Hearing Communication Centre  
630 Fairview Rd., Ste. 103, Swarthmore, PA 19081

**Register for Adults Classes**





# Spring 2026 ASL Classes

No classes 5/25, 6/19, 7/3

**Weekday and Weeknight In-Person & Virtual Offerings**  
Register at <https://www.dhcc.org/education-programs/asl-classes>

**Kids ASL Classes - Virtual - The ten-week costs \$75 for thirty minutes per week.**

Kids-1 Tue 5/5-7/7 (make-up 7/14) 4 - 4:30pm, ages 2 - 5

Kids-2 Tue 5/5-7/7 (make-up 7/14) 4:35 - 5:05pm, ages 6 - 8

Kids-3 Tue 5/5-7/7 (make-up 7/14) 5:10 - 5:40pm, ages 9 - 11

Register for Kids Classes



## ASL STORYTIME & PLAY HOUR

We are excited to announce **ASL Storytime and Play Hour** for children ages 2-5 and 6-8. This in-person event will take place from **9:00 to 10:00 AM (ages 2-5)** and **10:00 AM to 11:00 AM (ages 6-8)** at the DHCC community room, located at 630 Fairview Rd., Suite 100, Swarthmore, PA.

The program will run for 5 weeks, starting on **Saturday, May 9th, and ending on Saturday, June 6th**. An additional session will be held on June 12th as a make-up date, if needed.

The cost for the 5-week program is \$50.00.

If you have any questions, reach out to [asl@dhcc.org](mailto:asl@dhcc.org) to inquire.

We hope to see you this spring!



# Spring 2026 ASL Classes

No classes 5/25, 6/19, 7/3

**Weekday and Weeknight In-Person & Virtual Offerings**  
Register at <https://www.dhcc.org/education-programs/asl-classes>

**Teen ASL Classes - Virtual - The ten-week costs \$100 for one hour per week.**

**Teen 1b Tue 5/5-7/7 (make-up 7/14)** 7-8pm, ages 12-17  
Study materials will be provided by DHCC.

**Teen 2b Tue 5/5-7/7 (make-up 7/14)** 7-8pm, ages 12-17  
Study materials will be provided by DHCC.

**Teen 3b Tue 5/5-7/7 (make-up 7/14)** 6-7pm, ages 12-17  
Study materials will be provided by DHCC.

**Teen 4c Wed 5/6-7/8 (make-up 7/15)** 7-8pm, ages 12-17  
Study materials will be provided by DHCC.

**Teen 1f Sat 5/9-7/18 (make-up 7/25)** 10-11am, ages 12-17  
Study materials will be provided by DHCC.

**Teen 4f Sat 5/9-7/18 (make-up 7/25)** 11:05am-12:05pm, ages 12-17  
Study materials will be provided by DHCC.

Register for Teen Classes





# Spring 2026 ASL Classes

**Weekday and Weeknight In-Person & Virtual Offerings**  
**Register at the link listed below each offering (or scan QR code)**

## In-Person - Mt. Airy Learning Tree (MALT) in Philadelphia

- MALT ASL 2**    **Wed 5/6-7/8**    (make-up 7/15)    **6:30-8:30pm**  
Church of St. Martin-in-the-Fields,  
8000 St. Martin's L, Philadelphia, PA 19119
- MALT ASL 5**    **Mon 5/4-7/13**    (make-up 7/20)    **6:30-8:30pm**  
United Lutheran Seminary -Room Number 304  
7301 Germantown Ave., Philadelphia, PA 19119
- MALT ASL 1**    **Thurs 5/7-7/9**    (make-up 7/16)    **6:30-8:30pm**  
United Lutheran Seminary - Room Number 304  
7301 Germantown Ave., Philadelphia, PA 19119

Register for MALT Adults

Open Registration



## In-Person - Bucks County Community College (BCCC)

- BCCC ASL 1**    **Mon 4/27-7/6**    (make-up 7/13)    **6:30-8:30pm**  
Newtown Campus, Founder Hall 313  
275 Swamp Rd., Newtown, PA 18940
- BCCC ASL 2**    **Tue 4/28-6/30**    (make-up 7/14)    **6:30-8:30pm**  
Newtown Campus, Founder Hall 313  
275 Swamp Rd., Newtown, PA 18940
- BCCC ASL 3**    **TBD**    (make-up - TBD)    **6:30-8:30pm**  
Newtown Campus, Founder Hall 313  
275 Swamp Rd., Newtown, PA 18940

Register for BCCC Adults

