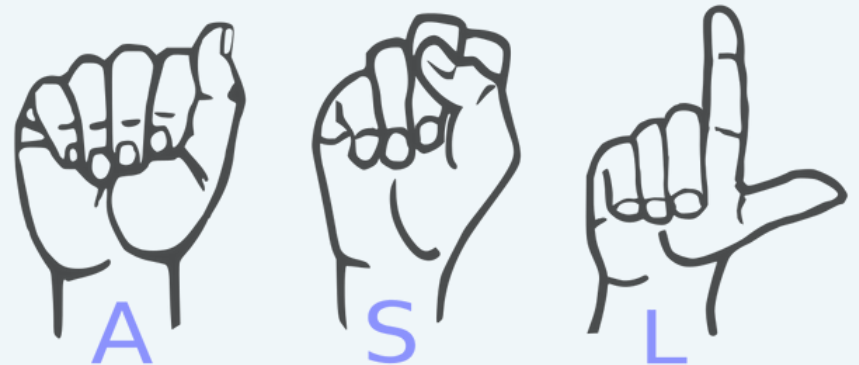




### ***FLASH Sale! Early Bird Special: Adults ASL Classes***

Get **\$25.00 off** the regular price of **\$200!** This special offer is available from August 15<sup>th</sup> at 5 PM until August 25<sup>th</sup> at 9 AM. After that, the classes will return to the regular price starting on August 25<sup>th</sup> at 9 AM.

Please sign up as soon as possible to take advantage of this discount. Just so you know, this offer does not apply to **BCCC, MLSN, or MALT ASL classes.**



Registration must be submitted by **Monday, September 22, 2025**  
If you are unable to register for any reason, please contact us at  
[asl@dhccc.org](mailto:asl@dhccc.org) or (484) 206-7896



## Fall 2025 ASL Classes

### General Class Information

We are thrilled to share our latest non-credit offerings with you! We have several in-person and virtual options for children, teens, and adults.

Each level meets for a total of 20 hours over ten weeks unless otherwise stated. The cost for one ten-week course is **\$200**. Our Level 1 classes utilize the textbook *A Basic Course in American Sign Language (ABC) - Second Edition*, which can be purchased separately from Amazon, eBay, or [www.diglo.com](http://www.diglo.com). The textbook costs approximately \$40 to continue for Levels 2, 3, and 4 in the future. For our Levels 4 class, we use the textbook *ASL at Work*. This textbook can be purchased separately for \$75 by emailing [asl@dhcc.org](mailto:asl@dhcc.org). All classes are presented in ASL and taught by Deaf individuals. Classes are for students age 18 or older unless otherwise stated.

DHCC reserves the right to cancel and/or combine classes due to insufficient enrollment on the date of the deadline. DHCC will only run a class if the paid enrollment minimum is met by the deadline. No refunds will be given after the first night of class.

If you have any questions, reach out to [asl@dhcc.org](mailto:asl@dhcc.org) to inquire. We hope to see you this fall!



**Registration must be submitted by Monday, September 22, 2025**

**If you are unable to register for any reason, please contact us at**

**[asl@dhcc.org](mailto:asl@dhcc.org) or (484) 206-7896**



## Fall 2025 ASL Classes

### ASL Classes Description

#### A Basic Course in American Sign Language (ABC) textbook – Lessons 1-22

#### ASL at Work textbook – Units 1-16

**ASL 1: American Sign Language:** (ABC, Lessons 1-5) Beginners Learn American Sign Language (ASL) in a relaxed learning environment with structured and spontaneous dialogue. You will develop appropriate conversational strategies unique to Deaf Culture while learning ASL vocabulary, ASL grammar, Deaf culture, and the history of Deaf culture and ASL.

**ASL 2: American Sign Language:** Beginners (ABC, Lessons 6-10) This is the second level of American Sign Language (ASL) classes. This class is intended for beginners with some prior knowledge of ASL – specifically, students who have already taken and passed ASL 1 or who have been evaluated into this level (in the case of students who already have prior knowledge but didn't take classes with DHCC). In this class, you will continue to learn ASL vocabulary, ASL grammar, Deaf Culture, and the history of Deaf culture and ASL.

**ASL 3: American Sign Language:** Beginners (ABC, Lessons 11-16) This is the third level of American Sign Language (ASL) classes. This class is intended for beginners with some prior knowledge of ASL – specifically, students who have already taken and passed ASL 2 or who have been evaluated into this level (in the case of students who already have prior knowledge but didn't take classes with DHCC). In this class, you will continue to learn ASL vocabulary, ASL grammar, Deaf Culture, and the history of Deaf culture and ASL.

**ASL 4: American Sign Language:** Level 4: (ABC, Lessons 17-22) & (ASL at Work, Units 13-16) This is the fourth level of American Sign Language (ASL) classes. This class is intended for students with some prior knowledge of ASL – specifically, students who have already taken and passed ASL Levels 1, 2, and 3 or who have been evaluated into this level (in the case of students who already have prior knowledge but didn't take classes with DHCC). In this class, you will continue to learn vocabulary, ASL grammar, Deaf culture, and the history of Deaf culture and ASL.



## Fall 2025 ASL Classes

### ASL Classes Description

**A Basic Course in American Sign Language (ABC) textbook – Lessons 1-22**  
**ASL at Work textbook – Units 1-16**

**ASL 5: American Sign Language:** Level 5: (ABC, Review Lessons 1-22) This is the fifth level of American Sign Language (ASL) classes. This class is intended for students with some prior knowledge of ASL – specifically, students who have already taken and passed ASL Levels 1, 2, 3, and 4 or who have been evaluated into this level (in the case of students who already have prior knowledge but didn't take classes with DHCC). In this class, you will continue to learn vocabulary, ASL grammar, Deaf culture, and the history of Deaf culture and ASL.

### Deaf Culture, Fingerspelling, & Numbering

**Deaf Culture, Fingerspelling, & Numbering:** (MUST complete ASL 3 or an evaluation with one of our qualified Deaf instructors). In this class, you will continue learning to focus on the basics of American Sign Language (ASL), including fingerspelling, numbers, and classifiers.



## Fall 2025 ASL Classes

### ASL Classes Description Conversational ASL Classes

**Conversational ASL 1 Receptive & Expressive Skills:** (MUST complete ASL 4 in order to take Conversational ASL Receptive & Expressive or complete an evaluation with one of our qualified Deaf instructors). This class focuses on developing both the ability to understand (receptive) and produce (expressive) American Sign Language (ASL). Receptive skills involve understanding signs and language, while expressive skills involve creating and signing accurately. In this class, you will continue learning receptive skills (comprehension, listening, reading, and contextual understanding) and expressive skills (signing accuracy, vocabulary, grammar, natural expression, narrative, and communication).

**Conversational ASL 2:** (MUST complete ASL Receptive & Expressive or complete an evaluation with one of our qualified Deaf instructors). This class focuses on improving your ability to communicate in ASL through real-time conversations and storytelling. In this class, you will continue learning ASL grammar, classifiers, slang, more ASL vocabulary, and dialogue.

**Conversational ASL 3:** (MUST complete ASL Conversational ASL 2 or complete an evaluation with one of our qualified Deaf instructors). This class focuses on improving your ability to communicate in ASL through real-time conversations and storytelling. In this class, you will continue learning ASL vocabulary and storytelling and further develop your fluency and social skills.

**Conversational ASL 4 Continuing:** (MUST complete ASL Conversational ASL 3 or complete an evaluation with one of our qualified Deaf instructors). In this class, you will continue learning more storytelling, dialogue, and Deaf Culture.

**Advanced Conversational ASL:** In this class, you will continue learning more dialogue and Deaf Culture.



## Fall 2025 ASL Classes

### ASL Classes Description Kids & Teen ASL Classes

**Kids ASL Classes – Virtual – The ten-week course costs \$75 for thirty minutes per week.**

**Kids-1 (ages 2-5):** In this class, you will continue learning basic American Sign Language (ASL) and storytelling.

**Kids-2 (ages 6-8):** In this class, you will continue learning basic American Sign Language (ASL), simple conversations, using games, activities, and storytelling.

**Kids-3 (ages 9-11):** In this class, you will continue learning American Sign Language (ASL) Vocabulary, simple conversations, using games, activities, and storytelling.

**Teen ASL Classes (ages 12-17) – Virtual/In-Person – The ten-week course costs \$100 for one hour per week.**

**The textbook/PDF name is American Sign Language. YES!**

**Teen 1:** In this class, you will continue learning and focus on the basics, such as vocabulary, fingerspelling, and conversational skills.

**Teen 2:** (MUST complete Teen 1 or an evaluation with one of our qualified Deaf instructors). You will continue learning and focus on the basics, such as vocabulary, fingerspelling, and conversational skills.

**Teen 3:** (MUST complete Teen 2 or an evaluation with one of our qualified Deaf instructors). You will continue learning and focus on the basics, such as vocabulary, fingerspelling, and conversational skills.





# Fall 2025 ASL Classes

No classes 10/2, 11/11, 11/26-11/29

**Weekday and Weeknight In-Person & Virtual Offerings**  
**Register at <https://www.dhcc.org/education-programs/asl-classes>**

## Ten-Week Virtual Classes

6:30-8:30 pm

ASL 1a	Mon 9/29-12/1	(make-up 12/8)
ASL 1b	Tue 9/30-12/9	(make-up 12/16)
ASL 1c	Wed 10/1-12/10	(make-up 12/17)
ASL 1d	Thurs 9/25-12/11	(make-up 12/18)
ASL 2a	Mon 9/30-12/1	(make-up 12/8)
ASL 2c	Wed 10/1-12/10	(make-up 12/17)
ASL 3a	Mon 9/29-12/1	(make-up 12/8)
ASL 4a	Mon 9/29-12/1	(make-up 12/8)
ASL 4c (ASL at Work textbook)	Wed 10/1-12/10	(make-up 12/8)

## Ten-Week Virtual Classes

6:30-8:30 pm

Convo 2-3a	Mon 9/29-12/1	(make-up 12/8)
Convo 1-2d	Thurs 9/25-12/11	(make-up 12/18)
Convo 4d	Thurs 9/25-12/11	(make-up 12/18)
Convo 1c - Receptive & Express Skills	Wed 10/1-12/10	(make-up 12/17)
Deaf Culture, Fingerspelling & Numbering-C	Wed 10/1-12/10	(make-up 12/17)

## Saturday morning Virtual Classes

Adv Convo-F	Sat 9/27-12/6	(make-up 12/13)	8am-10am
ASL 1f	Sat 9/27-12/6	(make-up 12/13)	8am-10am

\*For your information: a,b,c,d,e, and f correspond to Monday (a), Tuesday (b), Wednesday (c), Thursday (d), Friday (e), and Saturday (f).



# Fall 2025 ASL Classes

No classes 10/2, 11/11, 11/26-11/29

**Weekday and Weeknight In-Person & Virtual Offerings**  
**Register at <https://www.dhcc.org/education-programs/asl-classes>**

## Ten-Week In-Person Classes 6:30-8:30pm

**DHCC ASL 2** Mon 9/29-12/1 (make-up 12/8)  
Deaf-Hearing Communication Centre  
630 Fairview Rd., Ste. 103, Swarthmore, PA 19081

**DHCC ASL 4** Mon 9/29-12/1 (make-up 12/8)  
Deaf-Hearing Communication Centre  
630 Fairview Rd., Ste. 103, Swarthmore, PA 19081

**DHCC ASL 1** Tue 9/30-12/9 (make-up 12/16)  
Deaf-Hearing Communication Centre  
630 Fairview Rd., Ste. 103, Swarthmore, PA 19081

**DHCC ASL 1** Wed 10/1-12/10 (make-up 12/17)  
Deaf-Hearing Communication Centre  
630 Fairview Rd., Ste. 103, Swarthmore, PA 19081

**DHCC Convo 1** Wed 10/1-12/10 (make-up 12/18)  
Deaf-Hearing Communication Centre  
630 Fairview Rd., Ste. 103, Swarthmore, PA 19081

## Ten-Week In-Person Classes 6:30-8:30pm

**TBP ASL 1** Tue 9/30-12/9 (make-up 12/16)  
The Bagel Place  
404 Queen St., Philadelphia, PA 19147

**PAH ASL 3** Mon 9/29-12/1 (make-up 12/9)  
PAHrtners Deaf Services  
614 N Easton Rd., Glenside, PA 19038

**PAH ASL 1** Thurs 9/25 -12/11 (make-up 12/18)  
PAHrtners Deaf Services  
614 N Easton Rd., Glenside, PA 19038

**PSD ASL 1** Wed 10/1-12/10 (make-up 12/17)  
Pennsylvania School for the Deaf (PSD)  
100 West School House  
Philadelphia, PA 19144

**NLNA Convo ASL 1 & 2**  
Wed 10/1-12/10 (make-up 12/17)  
Northern Liberties Neighborhood Assoc.  
700 N. 3rd St., Philadelphia, PA 19123





# Fall 2025 ASL Classes

No classes 10/2, 11/11, 11/26-11/29

**Weekday and Weeknight In-Person & Virtual Offerings**  
**Register at <https://www.dhcc.org/education-programs/asl-classes>**

## Ten-Week In-Person Classes 6:00-8:00pm

**NW Library ASL 1 Tue 9/30-12/9 (make-up 12/16)**  
North Wales Library  
233 Swartley St., North Wales, PA 19454

**TechOwl ASL 4 Thurs 9/25-12/11 (make-up 12/18)**  
TechOwl Community Space  
1392 Cecil B. Moore Ave., Philadelphia, PA 19122

## Ten-Week In-Person Classes 10am-noon

**DHCC ASL 1 Fri 9/26-12/12 (make-up 12/19)**  
Deaf-Hearing Communication Centre  
630 Fairview Rd., Ste. 103, Swarthmore, PA 19081

**TechOwl ASL 1 Tue 9/30-12/9 (make-up 12/16)**  
TechOwl Community Space  
1392 Cecil B. Moore Ave., Philadelphia, PA 19122

**NLNA ASL 1 Wed 10/1-12/10 (make-up 12/17)**  
Northern Liberties Neighborhood Assoc.  
700 N. 3rd St., Philadelphia, PA 19123



## Fall 2025 ASL Classes

No classes 10/2, 11/11, 11/26-11/29

**Weekday and Weeknight In-Person & Virtual Offerings**  
**Register at <https://www.dhcc.org/education-programs/asl-classes>**

**Kids ASL Classes - Virtual - The ten-week costs \$75 for thirty minutes per week.**

Kids-1 Tue 9/30-12/9 (make-up 12/16) 4 - 4:30pm, ages 2 - 5

[Register for Kids Classes](#)

Kids-2 Tue 9/30-12/9 (make-up 12/16) 4:35 - 5:05pm, ages 6 - 8

Kids-3 Tue 9/30-12/9 (make-up 12/16) 5:10 - 5:40pm, ages 9 - 11

## ***ASL STORYTIME & PLAY HOUR***

We are excited to announce **ASL Storytime and Play Hour for children ages 2-5**. This in-person event will take place from 9:00 to 10:00 AM at the DHCC community room, located at 630 Fairview Rd., Suite 100, Swarthmore, PA.

The program will run for 10 weeks, starting on **Saturday, October 4th, and ending on December 13th**. An additional session will be held on December 20th as a make-up date, if needed. The cost for the 10-week program is \$100.00.

If you have any questions, reach out to [asl@dhcc.org](mailto:asl@dhcc.org) to inquire.  
We hope to see you this fall!



# Fall 2025 ASL Classes

No classes 10/2, 11/11, 11/26-11/29

**Weekday and Weeknight In-Person & Virtual Offerings**  
**Register at <https://www.dhcc.org/education-programs/asl-classes>**

## Teen ASL Classes - Virtual - The ten-week costs \$100 for one hour per week.

**Teen 1 Tue 9/30-12/9 (make-up 12/16)**  
Study materials will be provided by DHCC.

**4- 5pm, ages 12-17**

[Register for Teen Classes](#)

**Teen 2 Tue 9/30-12/9 (make-up 12/16)**  
Study materials will be provided by DHCC.

**5:05- 6:05pm, ages 12-17**

**Teen 3 Tue 9/30-12/9 (make-up 12/16)**  
Study materials will be provided by DHCC.

**6:10-7:10pm, ages 12-17**

**Teen 1 Sat 10/4-12/13 (make-up 12/20)**  
Study materials will be provided by DHCC.

**9-10am, ages 12-17**

**Teen 2 Sat 10/4-12/13 (make-up 12/20)**  
Study materials will be provided by DHCC.

**10-11am, ages 12-17**

## Teen ASL Classes - In-Person

**Teen 1 Wed 10/1-12/10 (make-up 12/17)**  
Study materials will be provided by DHCC.  
**Deaf-Hearing Communication Centre**  
630 Fairview Rd., Ste. 103, Swarthmore, PA 19081

**4- 5pm, ages 12-17**

**Teen 2 Wed 10/1-12/10 (make-up 9/17)**  
Study materials will be provided by DHCC.  
**Deaf-Hearing Communication Centre**  
630 Fairview Rd., Ste. 103, Swarthmore, PA 19081

**5:05-6:05pm, ages 12-17**





## Fall 2025 ASL Classes

**Weekday and Weeknight In-Person & Virtual Offerings**  
**Register at the link listed below each offering (or scan QR code)**

### **In-Person - Main Line School Night (MLSN) in Radnor**

**MLSN ASL 1** **Tue 9/16-11/25** (make-up 12/2) **10:00-11:30 am**

Main Line School Night at Cretzburg Center  
260 Gulph Rd., Radnor, PA 19087

**MLSN ASL 2** **Tue 9/16-11/25** (make-up 12/2) **Noon-1:30 pm**

Main Line School Night at Cretzburg Center  
260 Gulph Rd., Radnor, PA 19087

**MLSN ASL 1** **Thurs 9/19-12/4** (make-up 12/2) **6:30-8:30 pm**

Main Line School Night at Cretzburg Center  
260 Gulph Rd., Radnor, PA 19087

**Register for MLSN Adults**



### **In-Person - Mt. Airy Learning Tree (MALT) in Philadelphia**

**MALT ASL 3** **Mon 10/6-12/8** (make-up 12/16) **10am-noon**

**ASL at Work Textbook**

Church of St. Martin-in-the-Fields,  
8000 St. Martin's L, Philadelphia, PA 19119

**MALT ASL 1** **Mon 10/6-12/8** (make-up 12/16) **2:00-4:00pm**

Church of St. Martin-in-the-Fields,  
8000 St. Martin's L, Philadelphia, PA 19119

**MALT ASL 3** **Mon 10/6-12/8** (make-up 12/16) **6:30-8:30pm**

**ABC in American Sign Language textbook**

United Lutheran Seminary  
7301 Germantown Ave., Philadelphia, PA 19119

**MALT ASL 1** **Wed 10/8-12/10** (make-up 12/17) **6:30-8:30pm**

Church of St. Martin-in-the-Fields,  
8000 St. Martin's L, Philadelphia, PA 19119

**Register for MALT Adults**

**Open Registration - August 21<sup>st</sup> at 1PM**





## Fall 2025 ASL Classes

Weekday and Weeknight In-Person & Virtual Offerings  
Register at the link listed below each offering (or scan QR code)

### In-Person - Bucks County Community College (BCCC)

**BCCC ASL 2** **Mon 10/6-12/8** (make-up 12/15) 6:30-8:30pm

Newtown Campus, Founder Hall 313  
275 Swamp Rd., Newtown, PA 18940

**BCCC ASL 1** **Tue 10/7-12/9** (make-up 12/16) 6:30-8:30pm

Newtown Campus, Founder Hall 313  
275 Swamp Rd., Newtown, PA 18940

**BCCC ASL 3** **Wed 10/8-12/10** (make-up 12/17) 6:30-8:30pm

Newtown Campus, Founder Hall 313  
275 Swamp Rd., Newtown, PA 18940

Register for BCCC Adults

