



## Germantown Location

**Pennsylvania School for the Deaf**  
100 W. School House Lane  
Philadelphia, PA19144

*Five-week session meets twice a week*

### Session 1: February 22 – March 24

*Monday & Wednesday, 7 – 9 pm*

**ASL 1 – \$125.00**

**ASL 2 – \$125.00**

### Session 2: April 12 – May 12

*Monday & Wednesday, 7 – 9 pm*

**ASL 1 – \$125.00**

**ASL 2 – \$125.00**

**ASL 3 – \$140.00**

**All classes at PSD follow the Signing Naturally curriculum**

*You may register for both sessions at this time however you will only be required to remit payment for the first session by February 22. Payment for the second session will be due April 12.*



## Springfield Location

**E.T. Richardson**  
20 W. Woodland Avenue  
Springfield, PA 19064

*Ten-week session meets once a week*

### January 26 – April 13

**(No class on March 16 and 30)**

*Tuesdays, 7 – 9 pm*

**ASL 2 – \$125.00**

**ASL 3 - \$140.00**

### January 28 – April 8

**(No class on April 1)**

*Thursdays, 7 – 9 pm*

**ASL 1 – \$125.00**

**ASL 4 – \$140.00**

**ASL 1 & 2 follow Signing Naturally curriculum and ASL 3 & 4 follow other curriculums**

**For complete information about our classes or policy and procedure, please visit our website at [www.dhcc.org](http://www.dhcc.org).**

## REGISTRATION

*Please complete the registration form, then, detach and mail with payment to:*

**Deaf-Hearing Communication Centre**  
630 Fairview Road, Suite 100  
Swarthmore, PA 19081

**Name:** \_\_\_\_\_

**Address:** \_\_\_\_\_

**Phone:** \_\_\_\_\_

**E-mail:** \_\_\_\_\_

### Class Selection

#### **1. Pennsylvania School for the Deaf**

##### Session One

ASL 1

ASL 2

##### Session Two

ASL 1

ASL 2

ASL 3

#### **2. E.T. Richardson**

ASL 1

ASL 2

ASL 3

ASL 4

### Payment

*Payment is due before the first class*

Check for PSD (payable to DHCC)

Check for ETR (payable to Springfield Lions Club)

Money Order (same as above)

Credit card (M/C or VISA only)

\_\_\_\_\_  
**Credit Card Number**                      **Exp. Date**

\_\_\_\_\_  
**Signature**

# ABOUT OUR CLASSES

Due to the unique visual nature of American Sign Language (ASL), all lessons are presented without use of voice. This effective teaching method is applied in most credit and non-credit ASL classes to enable students to develop strong receptive and expressive skills. Students at each level will be introduced to ASL vocabulary (signs) as well as proper ASL grammar and syntax. Interaction with teachers, who are native ASL users in a relaxed setting with peers, provides students with structured and spontaneous dialogue practice. This gives students the opportunity to develop appropriate conversational strategies that are unique to American Deaf culture.

**Age Requirement:** 16 years or older

**Placement Evaluation:** Required for any students transferring from other programs, or if it has been more than one year since you enrolled in one of our classes. Contact Iris Boshes at [irisb@dhcc.org](mailto:irisb@dhcc.org) to set up an appointment.

**Cancellation/Refund Policy:** DHCC reserves the right to cancel and/or combine classes due to insufficient enrollment. No refund will be given after the first class.

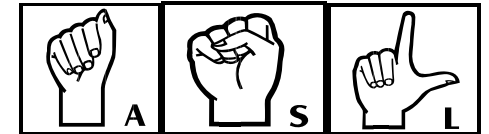
**Book Purchase:** The Signing Naturally Unit 1-6 book is available for purchase on the first day of class for most classes. The cost is \$65.00. It is highly recommended.

Deaf-Hearing Communication Centre, Inc.  
630 Fairview Road  
Suite 100  
Swarthmore, PA 19081



# Deaf-Hearing Communication Centre

## American Sign Language Class Schedule



## Winter/Spring 2010

*Non-Credit Courses Offered by:*  
**Deaf-Hearing Communication Centre,  
Inc.**

630 Fairview Road  
Suite 100  
Swarthmore, PA 19081

**Phone:** 610-604-0450  
**Email:** [irisb@dhcc.org](mailto:irisb@dhcc.org)



Deaf-Hearing Communication Centre, Inc.