



Germantown Location

Pennsylvania School for the Deaf
100 W. School House Lane
Philadelphia, PA19144

Five-week session meets twice a week

Session 1: September 14 – October 14

ASL 1 – \$125.00

Monday & Wednesday
10 am – 12 pm OR 7 – 9 pm

ASL 2 – \$125.00

Monday & Wednesday, 7 – 9 pm

ASL 3 – \$140.00

Monday & Wednesday, 7 – 9 pm

Session 2: October 26 – November 25

ASL 1 – \$125.00

Monday & Wednesday, 7 – 9 pm

ASL 2 – \$125.00

Monday & Wednesday
10 am – 12 pm OR 7 – 9 pm

ASL 3 – \$140.00

Monday & Wednesday, 7 – 9 pm

ASL 4 – \$140.00

Monday & Wednesday, 7 – 9 pm

You may register for both sessions at this time however you will only be required to remit payment for the first session by September 14. Payment for the second session will be due October 26.



Springfield Location

E.T. Richardson
20 W. Woodland Avenue
Springfield, PA 19064

Ten-week session meets once a week

September 29 – December 10

(No class on Thanksgiving)

ASL 1 – \$125.00

Tuesdays, 7 – 9 pm

ASL 2 – \$125.00

Thursdays, 7 – 9 pm

ASL 4 – \$140.00

Thursdays, 7 – 9 pm



For complete information about our classes or policy and procedure, please visit our website at www.dhcc.org.



Deaf-Hearing Communication Centre, Inc.

REGISTRATION

Please complete the registration form, then, detach and mail to:

Deaf-Hearing Communication Centre
630 Fairview Road, Suite 100
Swarthmore, PA 19081

Name: _____

Address: _____

Phone: _____

E-mail: _____

Class Selection

1. Pennsylvania School for the Deaf

Session One

- ASL 1 – Day
- ASL 1 – Evening
- ASL 2
- ASL 3

Session Two

- ASL 1 – Day
- ASL 1 – Evening
- ASL 2
- ASL 3

2. E.T. Richardson

- ASL 1
- ASL 2
- ASL 4

Payment

- Check for PSD (payable to DHCC)
- Check for ETR (payable to Springfield Lions Club)
- Money Order (same as above)
- Credit card

Credit Card Number **Exp. Date**

Signature

*Please remit payment with registration.
Thank you!*

ABOUT OUR CLASSES

Due to the unique visual nature of American Sign Language (ASL), all lessons are presented without use of voice. This effective teaching method is applied in most credit and non-credit ASL classes to enable students to develop strong receptive and expressive skills. Students at each level will be introduced to ASL vocabulary (signs) as well as proper ASL grammar and syntax. Interaction with teachers, who are native ASL users in a relaxed setting with peers, provides students with structured and spontaneous dialogue practice. This gives students the opportunity to develop appropriate conversational strategies that are unique to American Deaf culture.

Placement Evaluation: Required for any students transferring from other programs, or if it has been more than one year since you enrolled in one of our classes. Contact Meghan Rainone at MRainone@dhcc.org to set up an appointment.

Cancellation/Refund Policy: DHCC reserves the right to cancel and/or combine classes due to insufficient enrollment. No refund will be given after the first class.

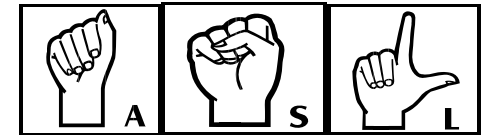
Book Purchase: There will be a book available for purchase on the first day of class for ASL levels 1 & 2. The cost is \$65.00. It is highly recommended, but not required.

Deaf-Hearing Communication Centre, Inc.
630 Fairview Road
Suite 100
Swarthmore, PA 19081



Deaf-Hearing Communication Centre

American Sign Language Class Schedule



Fall 2009

Non-Credit Courses Offered by:
**Deaf-Hearing Communication Centre,
Inc.**

630 Fairview Road
Suite 100
Swarthmore, PA 19081

Phone: 610-604-0450
Email: MRainone@dhcc.org